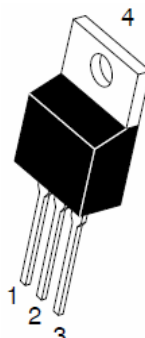
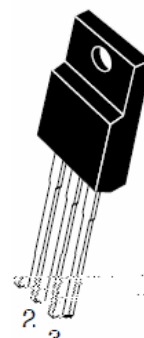


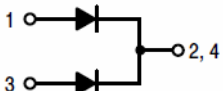
7 UHQFK 026 %DUULHU 6FKRWWN\ 5H

TO-220AB
TSR 6 & 7



ITO-220AB
TSR 6 & 7)





Features

- ‡ \$GYDQWUHQFK WHFKQRORJ\
- ‡ /RZRZUZYRQWDJH GURS
- ‡ /RZRZUZYRQVHV
- ‡ +LJKILFLHQF\ RSHUDWLRO
- ‡ /HDGH)HLQLVK &R#6OLDQW

Applications

- ‡ '&' & RQYHUWHUV
- ‡ \$&' & \$GDSWRUV
- ‡ 6ZLWFKRZHXSSOLHV
- ‡)UHHZKH'HLRQJ

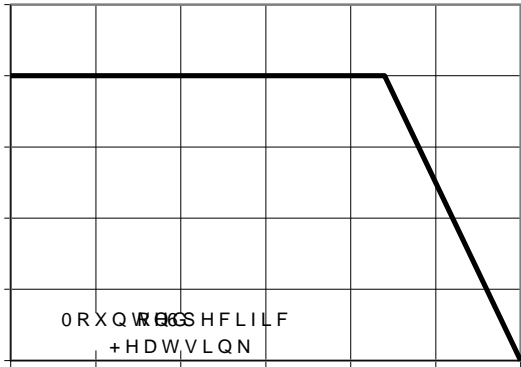
Maximum ratings and electrical characteristics (T_J = 25°C unless otherwise noted)

3DUDPHWHU		6\PERO	/LPLW	8QLW	
0D[LPXPHSHVSHUNYHYURQHW DJH		9550		9	
0D[LPXPHYHURJHZDUG UFXEWHIHWG		,) \$9		\$	
GHYLFH SHGLRGH					
3HDN IRVZDUEBUUHQW VLKDDHQH ZDYH		,) 60		\$	
VXSHULPSRVHGRFSCGLRVGHG					
2SHUDMXQDQLRQWRUDJH WHPSHUDW		XUH 0DQJH	WR	f &	
7\SLFVCHUPDO USHVULVQHDQFH		5\$ - &		f & :	
72 \$% , 72 \$%					
, QVWDQWDQHRXUWWRUJZDUG SHGLRGH		9)	7 < 3	0\$;	
	,) 2\$		7- f &	43	48
	,) 2\$		7- f &	38	
	,) 1\$		7- f &	0.73	0.79
	,) 1\$		7- f &	0.68	
, QVWDQWDQHRXUWWRUJZDUG UDWHYHYURQHW DJH		, 5		X\$	
			7- f &		P\$

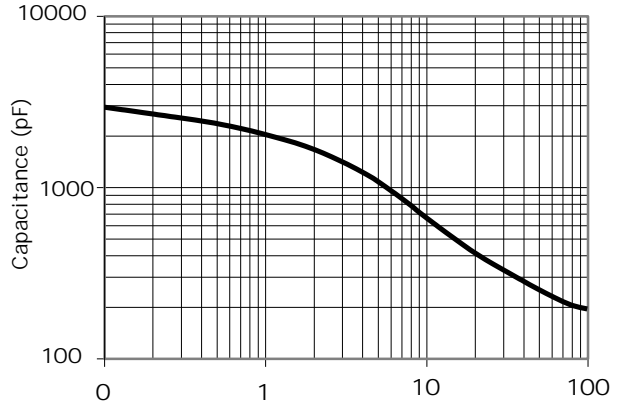
1RWHV
3XOVH WHVVSXOVH ZLGWK GXW\ F\FOH
3XOVH WHVW 3XOPH ZLGWK 0

, I \$YHUDDJH)RUZDUG &XUJHQQW

RATINGS AND CHARACTERISTICS CURVES 7\$ f & XQOHVQRWKBUZLVH

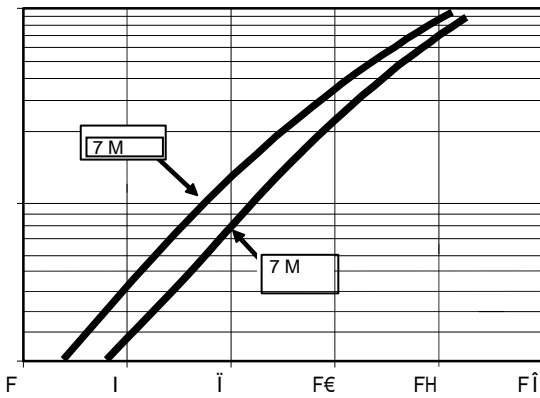


7F&DV7HP\$&
Current Derating, Case



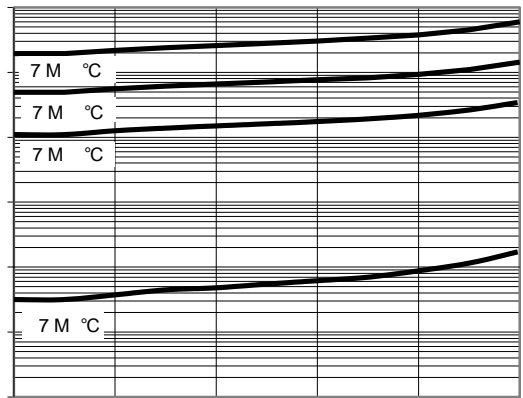
5HYHQRW9JH
Typical Junction Capacitance

, I, QVWDQWYRQJIZR88XEUH6QW



9I, QVWDQWDQH R9R/OYRDUJZHD UFG9
Typical Forward Voltage

, U 5HYHUVH &XUJHQQW X\$

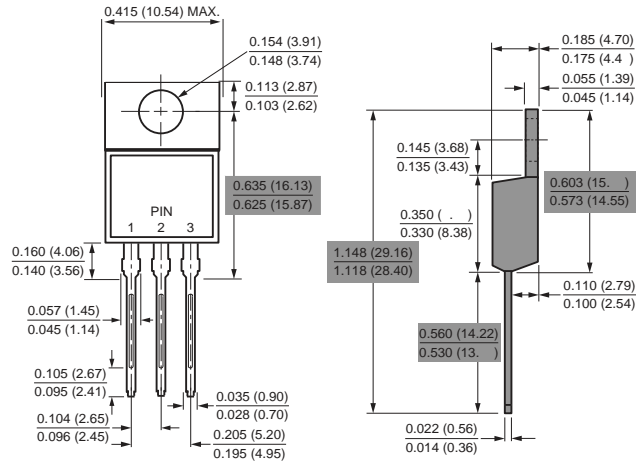


95 5HYHUVH 9ROWDJH 9ROWV
Typical Reverse Current

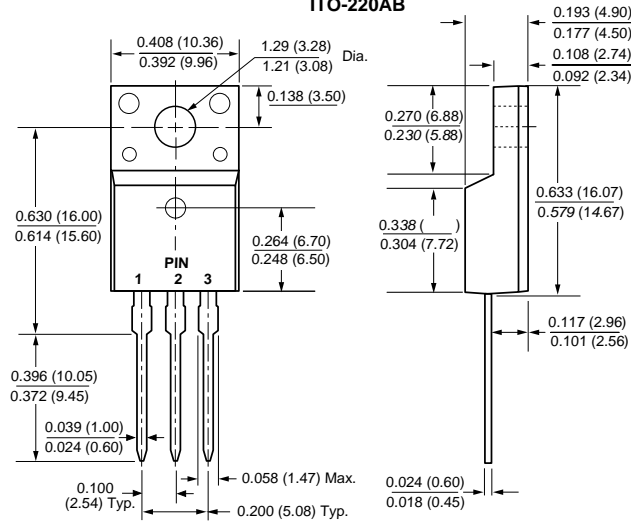
PACKAGE OUTLINE DIMENSIONS

1 R W H X Q L W , Q P P

TO-220AB

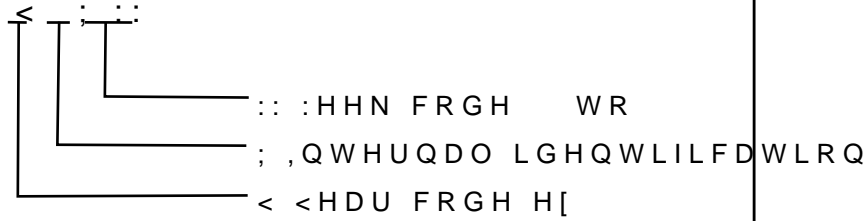


ITO-220AB



Marking Information

: &RPSDQ\ V WUDGHPDUN
83URGXFW P65GHO &7 RU 765 6 &7)
93'& LQIRUFDWLRQ



Packaging Information

7XEH 'LPHQVLRQV

,QVLGH %R[

2XWVLGH %R[

Packaging Information